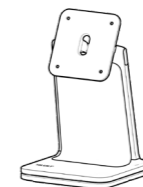




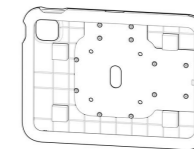
Pro Counter Stand

Quick Start Guide

Items Included



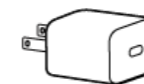
Counter Stand
(1)



Enclosure
(1)



Mount Screws
(4)



Power Supply
(1)



Card Reader Adapter
(Optional)



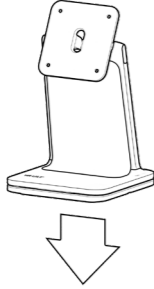
Payment Bracket
(Optional)

Before You Start

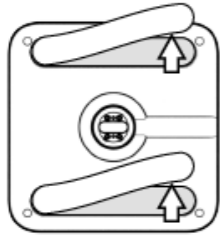
Assembly requires a Phillips head screwdriver. For best results, use a clean, flat surface to prevent damage.

1 Counter Stand

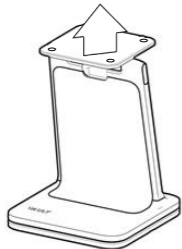
Step 1. Remove Stand and place on a flat, clean surface.



Step 2. Peel off protective film on bottom of rubber feet.

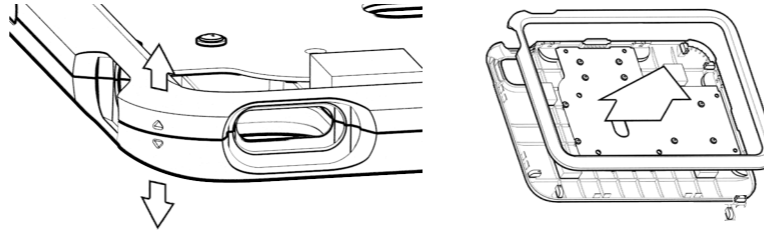


Step 3. Turn top mounting plate to face upward.



2 Enclosure

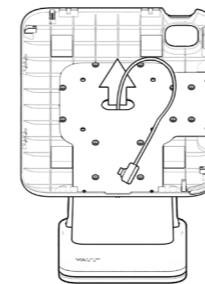
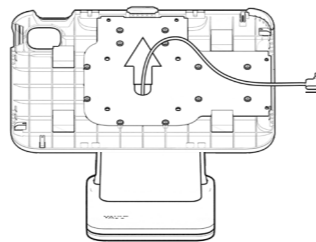
Step 1. Grab enclosure, and firmly pry open corner that has arrows and remove front bezel.



Step 2. Decide orientation and route stand cable through enclosure center hole.

Landscape

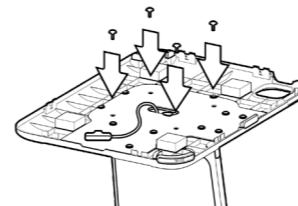
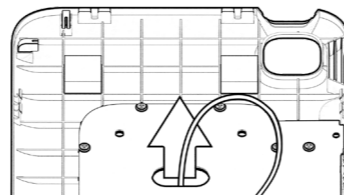
Portrait



Step 3. Attach enclosure to stand via the four included screws.

Landscape Mount

Portrait Mount



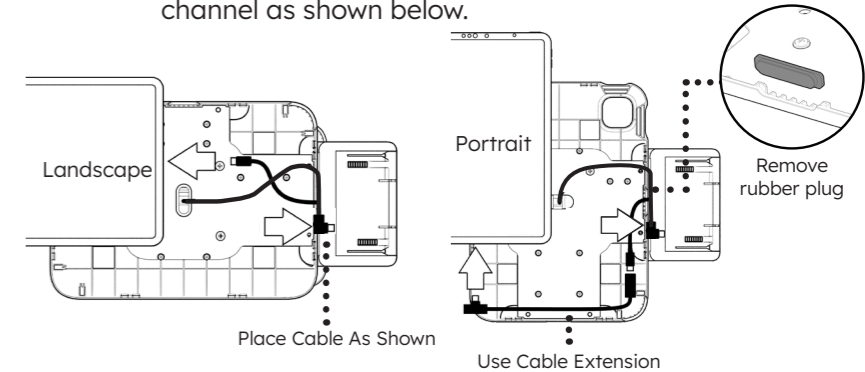
3 Payment (Optional)

Step 1. Follow assembly instructions on card reader support using QR code below.

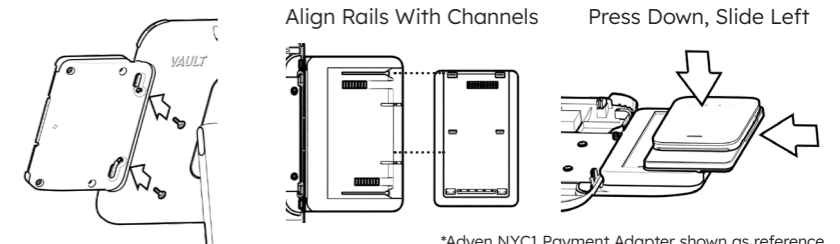


Scan and select your card reader assembly instructions

Step 2. Plug cables into payment bracket then route cable into channel as shown below.



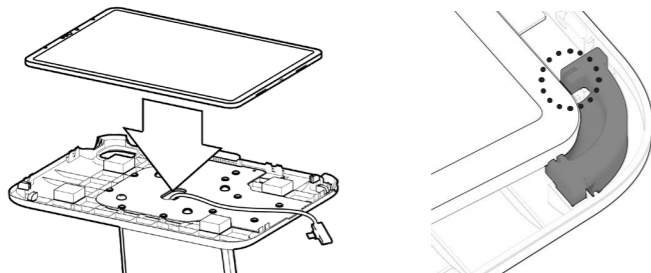
Step 3. Attach payment bracket using two included screws. Then mount card reader support assembly from above.



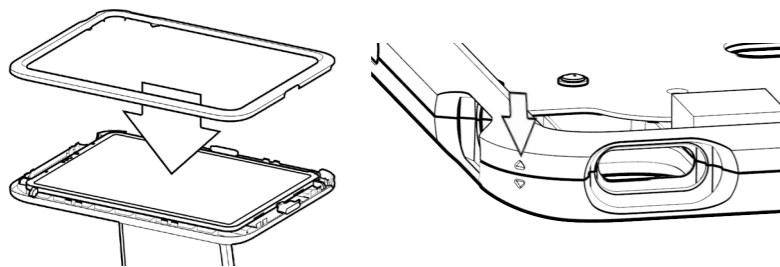
*Adyen NYC1 Payment Adapter shown as reference

4 Final Assembly

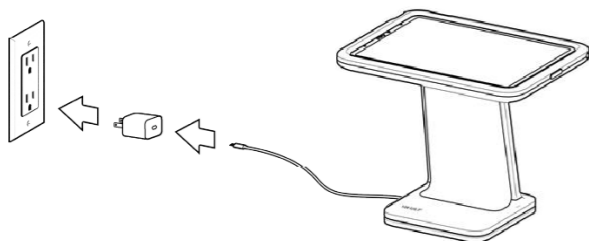
Step 1. Plug USB-C cable into iPad and insert into enclosure. Gently press the iPad to align into the rubber corners.



Step 2. Firmly press front bezel onto backplate making sure to align the corner arrows.



Step 3. Plug into wall outlet to begin charging and start use.

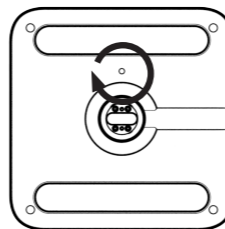


Complete

Optional Features

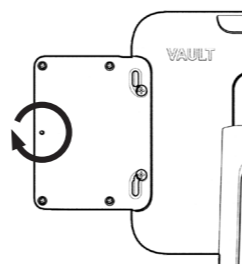
To Lock Stand Rotation

Turn 2.5mm hex screw at bottom of stand.



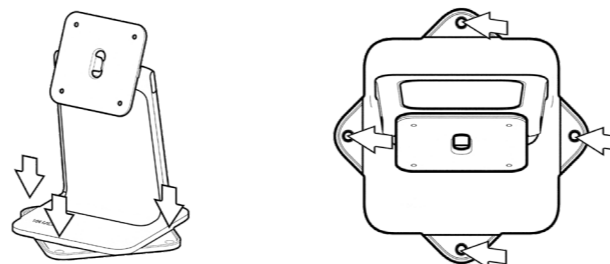
To Lock Payment Adapter

Turn 2.5mm hex screw at bottom of bracket stand.



To Secure Stand to Countertop Surface

Rotate stand to reveal holes, secure with screws (self-supplied).



Compliance

This product complies with all applicable requirements for the Federal Communications Commission, European Conformity, Waste Electronic and Electrical Equipment, and Restriction of Hazardous Substances.

Batteries, electronic, and electrical equipment should not be disposed of with household waste. Wherever possible, they should be segregated and brought to an appropriate collection point to enable recycling and avoid potential impacts on the environment and human health. For more information, contact your local authorities.



Warnings

Read all warnings before use

- Use only as intended; modifications may cause damage or malfunction.
- Place on a stable, level surface to prevent tipping or injury.
- Compatible only with supported iPad models and payment adapters.
- Use manufacturer-approved cables and power bricks; avoid excessive force on connections.
- Keep away from extreme heat, cold, moisture, and humidity.
- Do not attempt to modify or repair.
- Manufacturer is not liable for damage, injury, or improper use.
- Keep away from children; small parts may pose choking hazards.
- Ignoring these warnings can result in potential property damage or injury.
- Ensure compliance with all applicable laws and regulations.